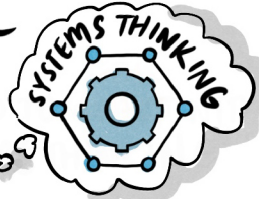


? ARE THE MATERIALS WE'RE USING SAFE?
 IS CIRCULARITY SAFE?
 ? IS CIRCULARITY INCLUSIVE?
 ? CIRCULARITY IN THE REGIONAL CONTEXT:

WE NEED TO START WITH



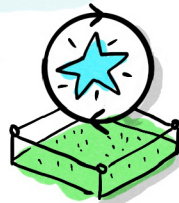
THE RISKS ARE BOTH REAL AND PERCEIVED



IN TYRES, EVERY MATERIAL IS DIFFERENT & CARRIES DIFFERENT IMPACTS & RISKS



HOW DO WE CREATE PROTECTED SPACES FOR INNOVATION?



WHO'S BEING ASKED TO HOLD THE RISK?

REGULATION LOOKS DIFFERENT IN THE SHIFT FROM LINEAR TO CIRCULAR ECONOMIES

POSE A CHALLENGE

LIKELY TO INCREASE

REGULATORY RESPONSES

WHEN WE DON'T KNOW ENOUGH, THEY'RE OVERLY CAUTIOUS

REGULATIONS ARE OFTEN BASED ON HUMAN SAFETY- BUT MAY NOT TAKE A HOLISTIC VIEW

REGULATING DOWNSTREAM DOESN'T ALWAYS MAKE SENSE: WE HAVE NO INFLUENCE ON WHAT GOES INTO IMPORTED TYRES

policy & regulatory landscape



HOW COULD POLICY DRIVE BETTER SOLUTIONS THROUGH LEVIES, ETC?

PREVENTATIVE LEGISLATION IS BETTER THAN A POST-HARM LENS

SHOULD REMOVE BARRIERS TO INNOVATION

POLICY

THIS IS SOMETHING WE COULD INFORM

WILL HELP CREATE ACCOUNTABILITY FOR INNOVATORS



WE DON'T HAVE TO START FROM SCRATCH: WE CAN LEARN FROM WHAT'S HAPPENING INTERNATIONALLY



THE CIRCULAR ECONOMY IS MORE THAN JUST RESOURCE RECOVERY

- WE ALSO NEED TO CONSIDER UPSTREAM DESIGN

understanding what is "safe"

THE SAFETY OF CURRENT SOLUTIONS SHOULD BE THE FOCUS



WE NEED TO CONSIDER THE ENTIRETY OF THE LIFECYCLE OF CHEMICALS & MATERIALS



IN THE PUBLIC DISCOURSE THERE ARE QUESTIONS & LACK OF TRUST IN REGULATORY PROCESSES

WE NEED TO BE CONSCIOUS OF BROADER MESSAGING: E.G. BENZINE IN FUEL IS OK ...BUT NOT IN OUR SOIL

how do we create safe circularity?

THERE ARE NO SILVER BULLETS

how does SCAN create impact?

REGULATIONS HELP PREVENT HARM, THEY DON'T MAKE GOOD THINGS HAPPEN

IN IP3 WE ARE:



① BUILDING NATIONALLY AVAILABLE DATABASES -WE'RE SEEKING CASE STUDY REGIONS

② UNDERSTANDING WHAT LEACHES OUT OF TYRES & E-WASTE



③ BUILDING A KNOWLEDGE BASE FOR INDUSTRY REGULATORS & COMMUNITIES

building & sharing knowledge



WE NEED TO COME BACK TO THE RESEARCH TO BALANCE OUT THE MEDIA'S ~SENSATIONALISATION~



WE NEED E.Q.

PEOPLE WHO ARE SCARED DON'T WANT STATS OR SCIENTIFIC LANGUAGE

WE NEED SPECIFIC INFORMATION TO SUIT PEOPLE IN THEIR CONTEXT

LACK OF TRUST IN "THE CITY"

EXTRACTION/MINING FOLLOWED BY INSTALLATION OF WASTE FACILITIES

THE IMPACTS ON IMPORTANT CULTURAL SITES, THE BROADER SOCIAL, CULTURAL & ENVIRONMENTAL HEALTH

E.G.: WASTE DUMPING IN BUSHLAND

public discourse -building trust-

KNOWLEDGE DISPERSION NEEDS TO HAPPEN IN A WAY THAT THE PUBLIC CAN UNDERSTAND & THEN TAKE ACTION



PILOT STUDIES HELP TO UNDERSTAND UNIQUE SPATIAL CONSIDERATIONS

EG: DISPOSAL OF BATTERIES & HOW WE DEFINE TOXICITIES IN PLASTICS

WHAT WORKS IN ONE PLACE WON'T WORK IN ANOTHER ...BIO-BASED PLASTICS?

...DO WE HAVE THE INFRASTRUCTURE THAT WE NEED?



understanding local contexts & communities



WE NEED TO THINK ABOUT ECONOMIES OF PURPOSE & PRIORITISE REGIONAL & REMOTE COMMUNITIES

... MANY ARE ALREADY MAKING CHANGES WITH THE RESOURCES THEY HAVE

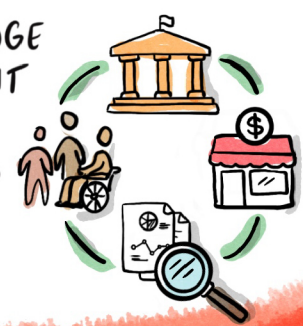
RESEARCHING WHAT CHEMICALS ARE ESSENTIAL FOR WELLBEING



WE NEED TO COMMUNICATE THE - ECONOMIC - BENEFITS OF THE CIRCULAR ECONOMY

WE NEED TO GET KNOWLEDGE FROM RESEARCHERS OUT TO COMMUNITIES

- GOVERNMENT, BUSINESSES & COMMUNITIES NEED TO WORK TOGETHER



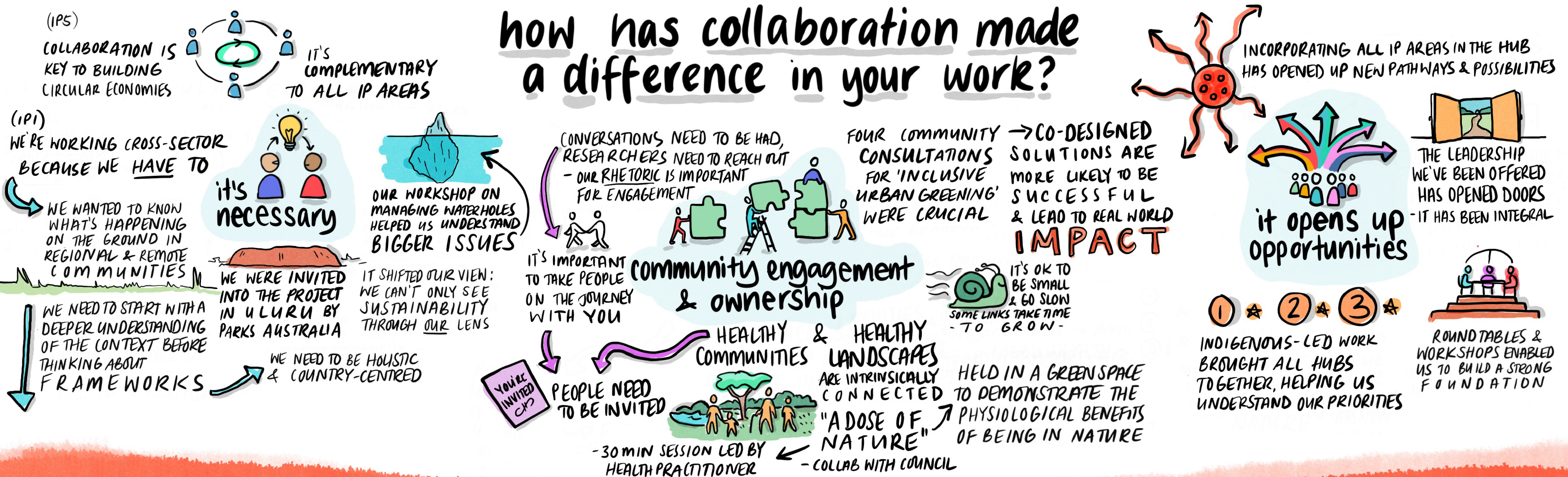
SCAN WED HUB 5 FEB DAY 2025

PANEL 1: WASTE RESOURCES- SAFE CIRCULARITY

how does your work contribute to building sustainable communities?



how has collaboration made a difference in your work?



SCAW WED
HUB 5 FEB
DAY 2025

PANEL 2: SUSTAINABLE COMMUNITIES

waste as a resource: how is it changing?

KERBSIDE RECYCLING DIDN'T EXIST 30 YEARS AGO

...BUT WASTE IS OFTEN STILL SEEN AS RUBBISH, NOT A RESOURCE

WE'VE HAD TO GET INVOLVED IN RESPONSE TO BAD POLICY FROM LOCAL GOVERNMENTS

IMPACT OF CHINA'S NATIONAL SWORD POLICY

2019 NATIONAL WASTE POLICY ACTION PLAN

CHANGING TO A SYSTEMS POINT OF VIEW, TRANSITIONING TO A CIRCULAR ECONOMY

→ AUSTRALIAN CIRCULAR ECONOMY HUB 2022 MINISTERIAL ADVISORY GROUP = FRAMEWORK

WE'VE REMOVED THE STIGMA OF WASTE

SHOALHAVEN CITY LHD GREEN CERAMICS MICROHUB HAS ALREADY PRODUCED 800KG 3D PRINTING FILAMENT & THOUSANDS OF TILES

changing perceptions

COMMUNITY BELIEVE IN WHAT WE DO

WE AIM TO HELP COMMUNITY MANAGE THE INCREASING WASTE STREAM

THERE ARE DIFFERENT WASTE CHALLENGES IN METRO & REGIONAL AREAS

FOR EXAMPLE

• WHAT CAN BE REUSED & HOW

• THE ROLES PEOPLE PLAY

bespoke approaches are needed

REMOTE COMMUNITIES DON'T HAVE ECONOMIES OF SCALE

THERE'S NO SUCH THING AS "ONE SIZE FITS ALL"

- WE NEED MULTIPLE PATHWAYS

SCAW HUB BRINGS DIFFERENT GROUPS TOGETHER - APPLYING WHAT WE'RE LEARNING, LISTENING TO EACH OTHER

IP5 TARGETS

- REDUCE MATERIALS EXTRACTED FROM NATURE FROM 30-27 TONNES
- DOUBLE CIRCULARITY RATES FROM <5% TO <10% BY 2035
- REDUCE GREENHOUSE GASES BY 14% - \$20BN GDP

CIRCULAR ECONOMY ACT = FRONT OF PIPE SOLUTIONS

IDENTIFYING OPPORTUNITIES TO PARTNER WITH SCIENTISTS & UNIVERSITIES

SHOALHAVEN CITY LHD

5678km²

1

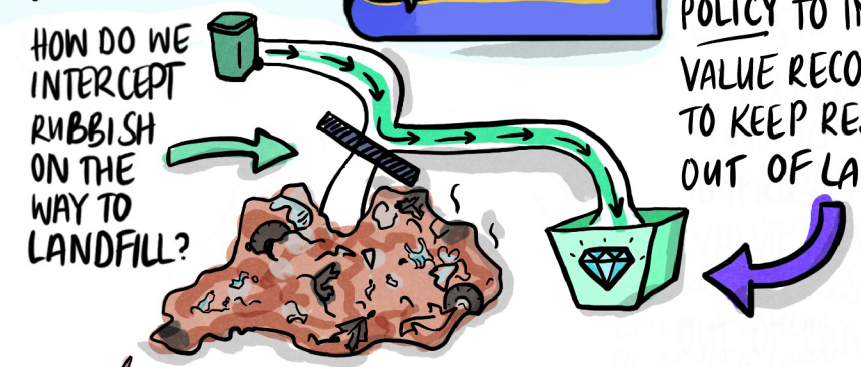
- DIVERSION OF WASTE FROM LANDFILL WAS A KEY PRIORITY

END OF LIFE TYRES & CONVEYOR BELTS -

WE LEARN THROUGH CASE STUDIES... WE ANALYSE DATA FOR INSIGHTS & POSSIBLE BARRIERS...

... WE'RE EXPLORING HOW TO IMPROVE POLICY TO INCREASE VALUE RECOVERY & TO KEEP RESOURCES OUT OF LANDFILL

designing out the problem



CARING FOR COUNTRY HAS HAPPENED FOR GENERATIONS

FIRST NATIONS THINK TANK ON COUNTRY IN N.E. ARNHEM LANDS

GROUPS GATHERED TO TALK ABOUT PLASTICS ON BEACHES

INTEGRAL ENGAGEMENT WITH COMMUNITY

TOURED MICRO FACTORIES, OBSERVED & DISCUSSED THE ACTIONS OF RANGERS TO MANAGE FISHING NETS WASHED UP ON BEACHES

understanding the impacts on country & culture

REMOTE COMMUNITIES DON'T HAVE RESOURCES & FACILITIES TO MANAGE - NETS OFTEN INSTAD BURNT OR BURIED

- HOW DO WE DEAL WITH NEWER MATERIALS LIKE PLASTIC?
- HOW DO WE PROTECT ARNHEM LAND FROM A CONSTANT TIDE OF RUBBISH FROM AROUND THE WORLD?

WHAT IS COUNTRY?

CARVED INTO A CONVEYOR BELT

THESE MATERIALS BECOME AN EXTENSION OF COUNTRY

STORYTELLING THROUGH NETWORKS MADE WITH GHOST NETS

BEACHES ARE CULTURALLY SIGNIFICANT, THIS ISN'T JUST A "PLASTICS PROBLEM"